

Bijlage 4.3 - Samenvatting resultaten Letmaal en Lnight industrieterrein 2021 (Rekenmethode Ow)

**Aantallen woningen per blootstellingsklasse Letm en Lnight - Industrierrein Botlek-Pernis**

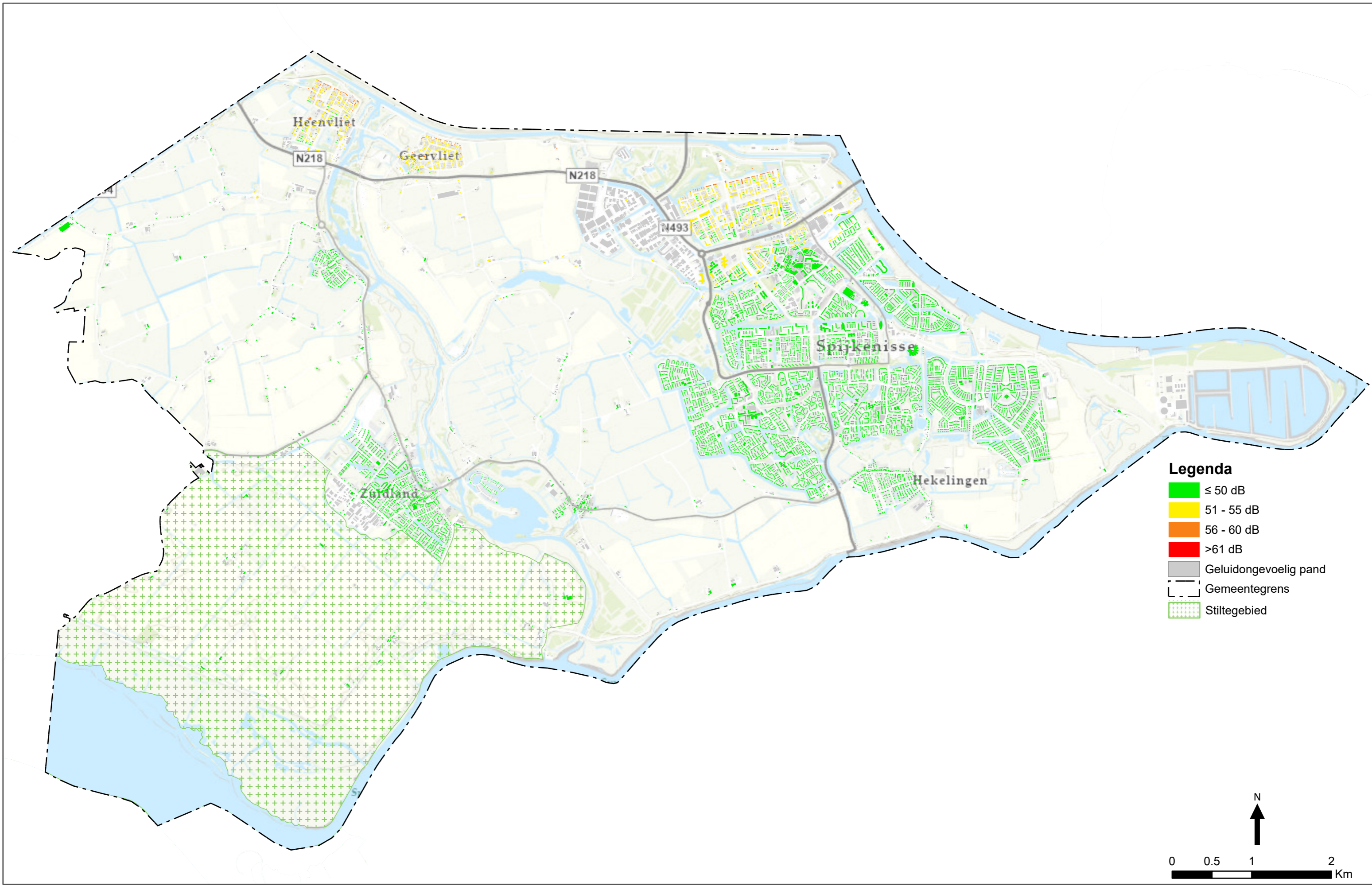
klasse Letmaal	IT Botlek-Pernis
≤ 40 dB	1.749
40-45 dB	17.406
45-50 dB	14.804
50-55 dB	5.708
55-60 dB	750
60-65 dB	0
65-70 dB	0
70-75 dB	0
≥ 75 dB	0
Totaal	40.417

klasse Lnight	IT Botlek-Pernis
≤ 35 dB	19.155
35-40 dB	14.804
40-45 dB	5.708
45-50 dB	750
50-55 dB	0
55-60 dB	0
60-65 dB	0
65-70 dB	0
≥ 70 dB	0
Totaal	40.417

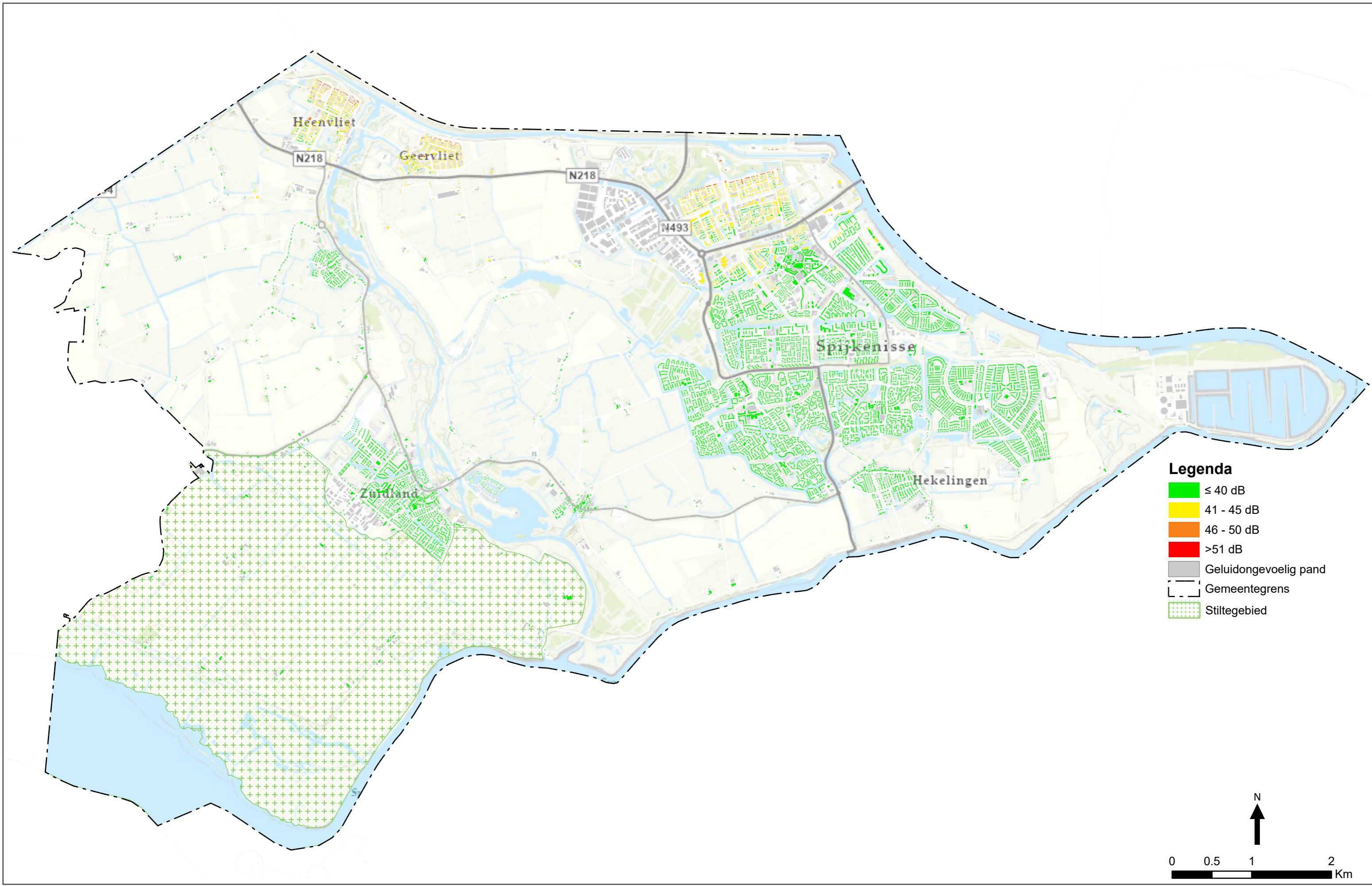
≥ 46 dB	21.262
≥ 51 dB	6.458
≥ 56 dB	750
≥ 61 dB	0
≥ 63 dB	0
≥ 66 dB	0
Totaal	40.417
≤ 40 dB	1.749
41 dB	1.700
42 dB	2.963
43 dB	3.896
44 dB	4.496
45 dB	4.351
46 dB	4.140
47 dB	3.022
48 dB	3.027
49 dB	2.538
50 dB	2.077
51 dB	1.502
52 dB	1.203
53 dB	1.166
54 dB	990
55 dB	847
56 dB	434
57 dB	256
58 dB	53
59 dB	5
60 dB	2
61 dB	0
62 dB	0
63 dB	0
64 dB	0
65 dB	0
66 dB	0
67 dB	0
68 dB	0
69 dB	0
70 dB	0
71 dB	0
72 dB	0
73 dB	0
74 dB	0
≥ 75 dB	0

≥ 41 dB	6.458
≥ 46 dB	750
≥ 51 dB	0
≥ 56 dB	0
≥ 57 dB	0
≥ 61 dB	0
Totaal	40.417
≤ 35 dB	19.155
36 dB	4.140
37 dB	3.022
38 dB	3.027
39 dB	2.538
40 dB	2.077
41 dB	1.502
42 dB	1.203
43 dB	1.166
44 dB	990
45 dB	847
46 dB	434
47 dB	256
48 dB	53
49 dB	5
50 dB	2
51 dB	0
52 dB	0
53 dB	0
54 dB	0
55 dB	0
56 dB	0
57 dB	0
58 dB	0
59 dB	0
60 dB	0
61 dB	0
62 dB	0
63 dB	0
64 dB	0
65 dB	0
66 dB	0
67 dB	0
68 dB	0
69 dB	0
≥ 70 dB	0

# Bijlage 4.3.1 Letmaal Industrieterreinen (Botlek-Pernis) Nissewaard (Omgevingswet)



# Bijlage 4.3.2 Lnight Industrieterreinen (Botlek-Pernis) Nissewaard (Omgevingswet)



**Legenda**

- ≤ 40 dB
- 41 - 45 dB
- 46 - 50 dB
- >51 dB
- Geluidongevoelig pand
- Gemeentegrens
- Stiltegebied

N

0 0.5 1 2 Km